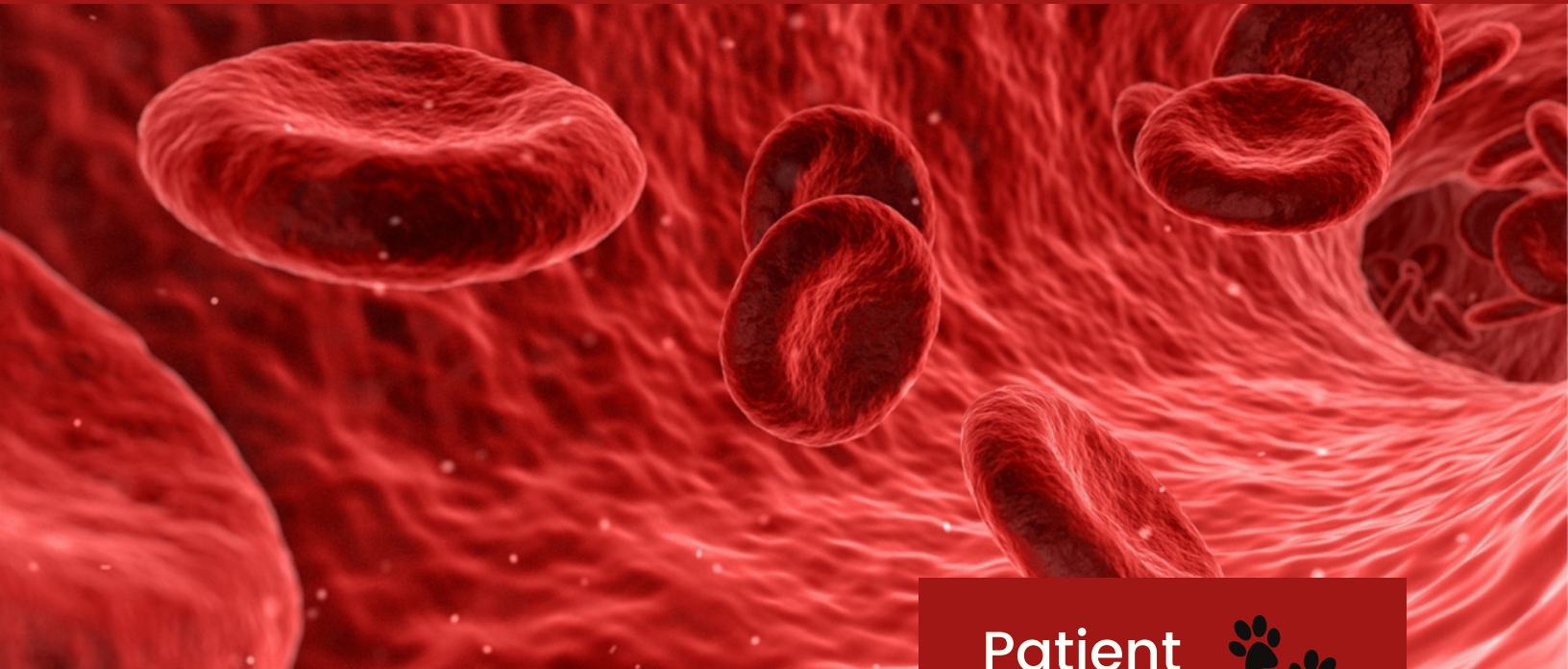


Avoiding Sample Hemolysis



Collection Technique

- Use the **largest vein** possible and the **right gauge** needle. Minimum 21 or 23g.
- Alcohol use on the venipuncture site should be **allowed to dry** completely before drawing the blood.
- **Minimize suction** on the syringe, and do not draw back too quickly.
- After performing venipuncture, remove the needle from the syringe before dispensing into the blood tube. **Transfer the blood gently** down the side of the collection tube. **Fill order from the syringe** is Citrate Blue Top , EDTA Purple Top, SST/Red Top Tube, NaFI Grey Top.
- **Correct fill order for a Vacutainer** : Citrate- Blue Top, SST/Red Top for serum, Heparin Green top, EDTA Purple top, NaFI Grey Top.
- **Invert the tube gently** as recommended by the tube manufacturer.
- Keep EDTA samples and clotted/separated serum samples cool in the fridge or near (**but not touching**) ice packs. **Avoid freezing.**



Patient



- **Fasted** samples are preferred as lipemia can be a large contributing factor to hemolysis especially in dogs.
- Use "**fear free** " protocols such as [these](#) recommended by boarded anesthesiologist Dr. Shafford to facilitate blood collection.
- Please note in the history if the patient has been sedated. Most fear free protocols using gabapentin or trazodone are not expected to have an impact on lab values. Heavy sedation can contribute to a lower PCV and proteins.
- Occlude the vein no more than a **few seconds** prior to collection.